

# ROSETONES



F 17-2  
8 x 8 mm  
∅ 250 mm



F 23-1  
10 x 5 mm  
∅ 250 mm



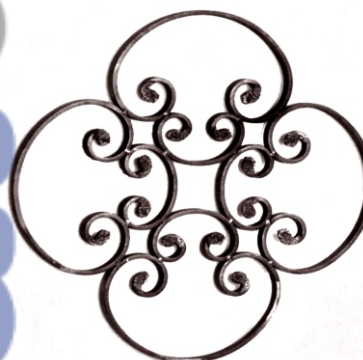
F 23-2  
20 x 4 mm  
∅ 250 mm



F 33-4E  
16 x 4 mm  
∅ 250 mm



F 24-1  
10 x 5 mm  
∅ 380 mm



F 24-C3  
12 x 6 mm  
∅ 450 mm

**NUEVOS**



F 901-I  
H. 155 x L. 180 mm  
≠ 10 x 5



F 03.600  
Martillado  
H.400 x L.400 mm .  
12 mm

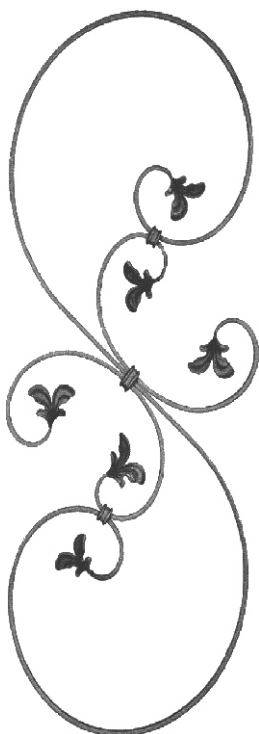


F 03.084  
ANILLO COMPUESTO  
H.400 X L.125 m  
□ 12 mm

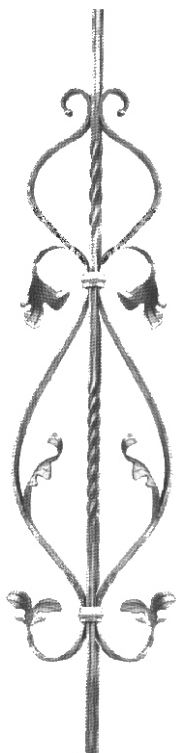
**hierromat s.a.**

SECCION ELEMENTOS PARA HERRERIA ARTISTICA

# PANELES



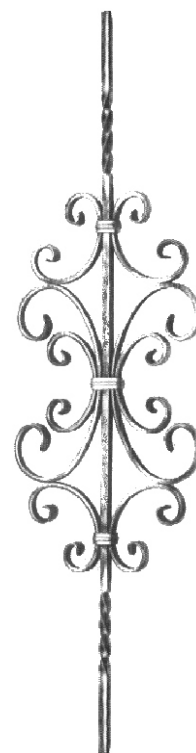
F 52-1  
12 x 6 mm  
350 x 870 mm



F 52-2  
12 x 12 mm  
235 x 900 mm

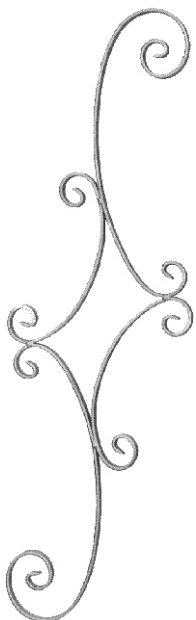


F 52-A3  
12 x 12 mm  
170 x 900 mm



F 52-F1  
12 x 12 mm  
260 x 900 mm

2



F 68-1  
16 x 4 mm  
250 x 720 mm



F 62-2  
20 x 6 mm  
240 x 730 mm



F 62-1  
20 x 6 mm  
250 x 730 mm



F 05.591  
□ 14 mm  
H.950 x L.100 mm



F 05.562  
Ø 12 mm  
H. 900 x L.175 mm

**hierromat s.a.**  
SECCION ELEMENTOS PARA HERRERIA ARTISTICA

# BARRAS



F 106-3E  
12 x 12 mm  
H = 900 mm



F 48-2  
12 x 12 mm  
H = 900 mm



F 05.432.01  
12 x 12 mm  
H = 950 mm



F 05.433.01  
12 x 12 mm  
H = 950 mm



F 11.041.85  
ø14 mm  
H.1000 X L.125 mm.



F 50-5  
12 x 12 mm  
30 x 900 mm



F 50-7  
12 x 12 mm  
140 x 900 mm



F 130-7  
14 x 14 mm  
H = 900 mm



F 50-8 14 mm  
F 50-9 16 mm  
F 50-10 25 mm

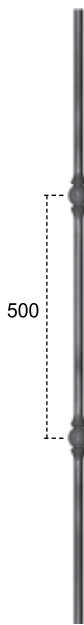


(BARRA PARA ATADURAS)  
F 158-3  
14 x 4 mm  
L = 2000 mm

# BARRAS



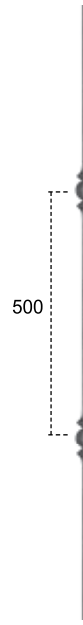
F 68-101  
14 mm forja italiana  
c/anillo 1000 mm



F 68-102  
14 mm forjada lisa  
2 anillos -1000 mm



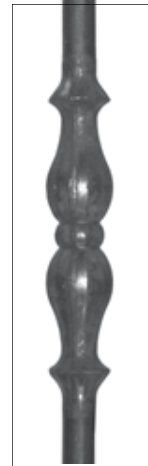
F 68-121  
14 mm forjada  
c/anillo -1000 mm



F 68-122  
14 mm forja italiana  
1000 mm



F 68-111  
14 mm forja italiana  
c/anillo -1000 mm



4

NUEVOS

**hierromat s.a.**  
SECCION ELEMENTOS PARA HERRERIA ARTISTICA

FCO. ACUÑA DE FIGUEROA 2083 - C.P. 11800 - MONTEVIDEO - URUGUAY - TEL : 2924 71 46\* - FAX : 2924 44 23

## ELEMENTOS PARA BALCON

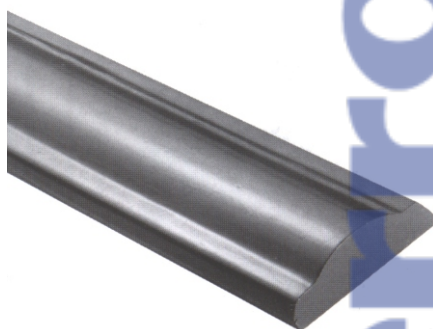


F64-H14  
14 x 14 mm  
H= 1200mm



F113-6  
30 x 30 mm  
H= 1100mm

## PASAMANOS



F114-2  
58 x 14 mm  
L= 3000mm



F114-5  
40 x 8 mm  
L= 3000mm

**hierromat S.a.**

SECCION ELEMENTOS PARA HERRERIA ARTISTICA

FCO. ACUÑA DE FIGUEROA 2083 - C.P.11800 - MONTEVIDEO - URUGUAY-TEL : 2924 71 46\* - FAX : 2924 44 23

## ESES



H = 220 x L = 110 mm

F 74- 19 -10 x 5 mm  
 F 74- 20 -12 x 6 mm  
 F 74- 21 -16 x 4 mm  
 F 74- 23 -20 x 6 mm  
 F 74- 24 - 8 x 8 mm



H = 290 x L = 120 mm

F 74- 13 -10 x 5 mm  
 F 74- 14 -12 x 6 mm  
 F 74- 15 -16 x 4 mm  
 F 74- 17 -20 x 6 mm  
 F 74- 18 - 8 x 8 mm



H = 360 x L = 125 mm

F 74- 7 - 10 x 5 mm  
 F 74- 8 -12 x 6 mm  
 F 74- 9 -16 x 4 mm  
 F 74- 10 -20 x 6 mm  
 F 74- 12 - 8 x 8 mm



H.290 X L.115 mm.

F 80-14  
 Ø 14

## RIZOS



(PUNTAS FORJADAS)

H = 110 x L = 60 mm

F 80-A3  
 12 x 6 mm



(PUNTAS FORJADAS)

H = 150 x L = 75 mm

F 88-M6E  
 12 x 6 mm



(PUNTAS FORJADAS)

H = 115 x L = 95 mm

F 88-M7E  
 12 x 6 mm



H = 360 x L = 125 mm

F 72-13E  
 12 x 6 mm



H = 115 x L = 60 mm

F 78- 2 -12 x 6 mm  
 F 78- 3 -16 x 4 mm  
 F 78- 5 -20 x 6 mm  
 F 78- 6 - 8 x 8 mm



H = 180 x L = 85 mm

F 78- 7 -10 x 5 mm  
 F 78- 8 -12 x 6 mm  
 F 78- 9 -16 x 4 mm  
 F 78- 11 -20 x 6 mm  
 F 78- 12 - 8 x 8 mm



H = 135 x L = 75 mm

F 78-21  
 10 x 5 mm  
 F 88-5  
 16 x 4 mm  
 F 84- 11E  
 20 x 6 mm



H.180 X L.105 mm.

F 84-14  
 Ø 14

**hierromat s.a.**  
 SECCION ELEMENTOS PARA HERRERIA ARTISTICA

# ADORNOS



**F 136-3**  
70 x 55 mm  
# 3 mm  
derecha



**F 136-4**  
70 x 55 mm  
# 3 mm  
izquierda



**F 136-A5**  
∅ 65 mm  
H = 40 mm



**F 136-12**  
30 x 90 mm  
# 3 mm  
izquierda



**F 136-13**  
30 x 90 mm  
# 3 mm  
derecha



**F 137-7**  
65 x 130 mm  
# 1 mm



**F 137-9E**  
110 x 60 mm  
# 1 mm

**F 137-8**  
45 x 90 mm



**F 138-2**  
∅ 60 mm  
# 2 mm



**F 138-3**  
∅ 85 mm  
# 2 mm



**F 138-4**  
∅ 90 mm  
# 2 mm



**F 138-6**  
∅ 65 mm  
# 0,6 mm



**F 138-7**  
∅ 60 mm  
# 3 mm



**F 138-8**  
∅ 130 mm  
# 3 mm



**F 138-9**  
35 x 70 mm  
# 0,5 mm



**F 138-10**  
45 x 85 mm  
# 0,5 mm



**F 138-11**  
75 x 70 mm  
# 0,6 mm



**F 138-12**  
95 x 105 mm  
# 1 mm



**F 138-13**  
55 x 57 mm  
# 0,6 mm



**F 138-14E**  
190 x 200 mm  
# 1 mm



**F 138-15**  
∅ 60 mm  
# 2 mm



**F 138-17E**  
∅ 37 mm  
# 1 mm



**F 138-18E**  
∅ 65 mm  
# 3 mm



**F 138-19E**  
∅ 90 mm  
# 3 mm



**F 139-4E**  
120 x 40 mm  
# 0,5 mm



**F 140-A6**  
∅ 39 mm  
H = 18 mm



**F 140-4**  
42 mm  
# 0,6 mm



**F 140-5**  
70 mm  
# 0,6 mm



**F 14.005.05**  
∅ 80 mm  
# 10 mm



**F 159-1**  
∅ 35 X 90 mm  
L = 8 mm



**F 159-2**  
∅ 45 X 110 mm  
L = 10 mm



**F 159-3**  
∅ 60 X 150 mm  
L = 12 mm



**F 159-4**  
∅ 60 X 155 mm  
L = 14 mm



**F 159-5**  
∅ 70 X 160 mm  
L = 16 mm



**F 02.086.01**  
∅ 75 X 155 mm  
L = 12 mm

**hierromat s.a.**  
SECCION ELEMENTOS PARA HERRERIA ARTISTICA

# ADORNOS

## ANILLOS ACERO



F 128-7  
 Ø 40 x 65 mm  
 Ø 14,5 mm



F 128-18  
 Ø 40 x 39 mm  
 Ø 14 mm



F 127-8  
 40 x 68 mm  
 ■ 14 mm



F 154-A9  
 40 x 22 mm  
 Ø 16 mm



F 154-B1 Ø 12,5  
 F 154-B2 Ø 14,5  
 F 154-B3 Ø 16,5  
 H. 25 x L. 35 mm



F 116-A7  
 100 x 100 mm  
 # 10 mm

F 128-8  
 Ø 40 x 65 mm  
 Ø 16 mm

F 128-19  
 Ø 40 x 39 mm  
 Ø 16 mm

F 127-9  
 40 x 65 mm  
 ■ 16 mm

F 154-A7  
 40 x 22 mm  
 Ø 14 mm

## PIÑA FORJADA



F 127-13 Ø 14,5  
 F 127-14 Ø 16,5  
 H. 40 x L. 40 mm



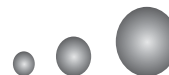
F 128-33  
 base Ø 28 mm  
 H = 80 mm



F 113-10  
 H = 120 mm  
 Ø 70 mm

## POMO SALIDA DE BARANDA

## ESFERAS ESTAMPADAS EN CALIENTE



F 116-F2  
 Ø 25 mm

F 116-F4  
 Ø 40 mm

F 116-F7  
 Ø 70 mm

## LANZAS



F 122-A1  
 base Ø 35 mm  
 H = 200 mm



F 123-5  
 base 25 x 25 mm  
 H = 160 mm



F 124-1  
 base Ø 12 mm  
 H = 130 mm



F 124-7  
 base Ø 15 mm  
 H = 130 mm



F 126-B2  
 base Ø 16 mm  
 H = 160 mm



F 126-1  
 H = 135 mm

F 124-2  
 base Ø 15 mm  
 H = 155 mm

F 126-B3  
 base Ø 26 mm  
 H = 135 mm



F 726-7  
 H. 135 x L. 65 mm  
 Ø 25 mm

**hierromat s.a.**  
 SECCION ELEMENTOS PARA HERRERIA ARTISTICA

FCO. ACUÑA DE FIGUEROA 2083 - C.P. 11800 - MONTEVIDEO - URUGUAY - TEL : 2924 71 46\* - FAX : 2924 44 23